

2015 PROGRESS REPORT

AIA 2030 COMMITMENT, BOSTON, MA



Giovanna Araujo

AIA 2030 Commitment Report Fellow

Agenda

First year signatories and motivation for signing on

Gabrielle Aitcheson, *ICON Architecture*

6:25 to 6:35

Small firm and creation of internal tracking tools for LPD

Dee Spiro, *Bergmeyer*

6:35 to 6:45

Medium firm and creation of internal tracking tools for LPD and pEUI

Liz Galloway, *SMMA*

6:45 to 6:55

Multi-office firm and challenges (plus strategies utilized) across larger portfolios

Andrew Bennett, *Perkins+Will*

6:55 to 7:05

Questions from the audience

7:05 to 7:20

Closing remarks

7:20ish



2016

20 Firms

298 Whole building/additions

244 Interior-only projects

542 Total projects

| SMMA

TRO
a healthcare design firm.

 ELLENZWEIG

PAYETTE

S A S A K I

Perkins Eastman

GOODYCLANCY
ARCHITECTURE / PLANNING / PRESERVATION

 WILSON ARCHITECTS

 BOSTON
REDEVELOPMENT
AUTHORITY

ARCHITECTS
STEFFIAN
BRADLEY
sha

**DiMella
Shaffer**

PERKINS + WILL

c&h architects

Bergmeyer

ZED
ZeroEnergy
DESIGN

cbt

HR

Gensler

JACOBS

**BUROHAPPOLD
ENGINEERING**

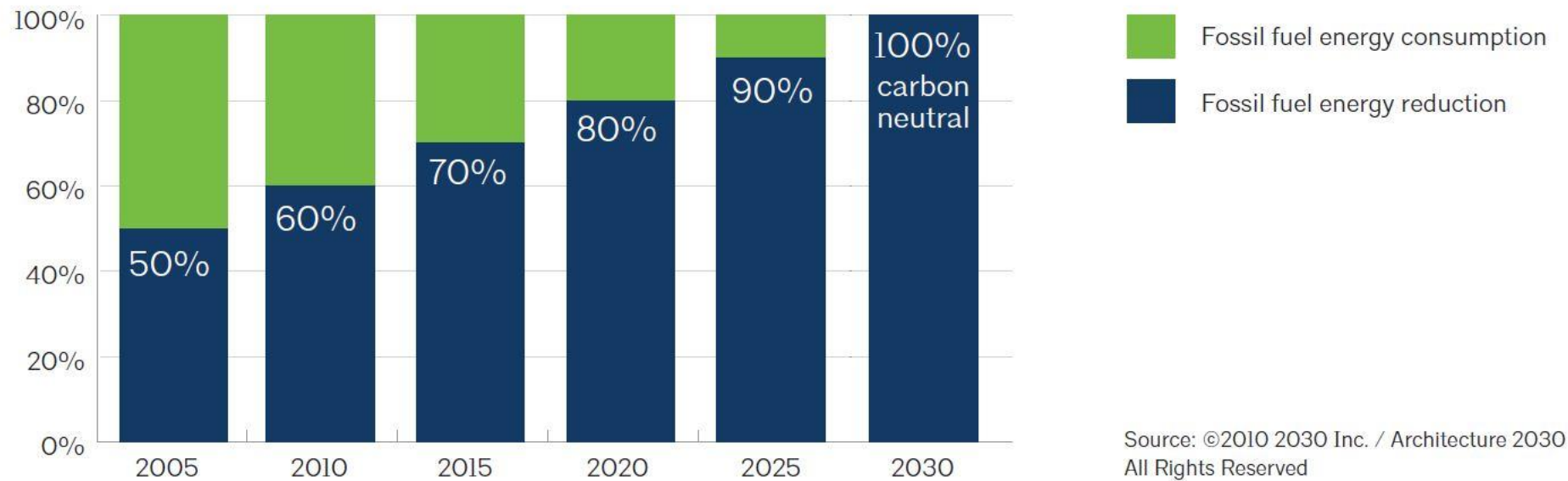
You did it!

Carbon Neutral Design

The AIA 2030 Commitment is a growing national initiative that provides a consistent, national framework with simple metrics and a standardized reporting format to help firms evaluate the impact design decisions have on an individual project's energy performance.

Each signee to the AIA 2030 Commitment pledges to send their firm's data to AIA National each year, denoting the volume of energy, and corresponding greenhouse gases (GHG's) reduced in the projects they designed and constructed.

National Goals

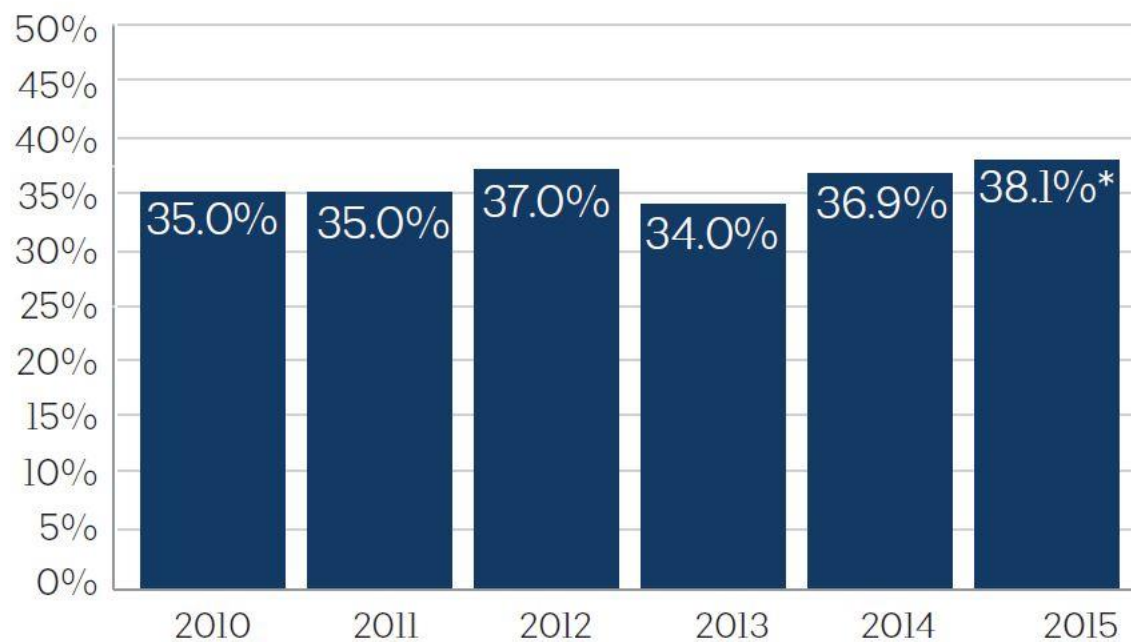


Reporting Criteria

- Project Name, Country, Design Phase, Zip Code
- Building Type, Area, and Square Footage
- Energy Modeling Status
- Energy Baseline (EUI)
- Design Energy (pEUI)
- Will Energy Use Data be Collected?
- LPD Baseline (Interior Only Projects)
- LPD (Interior Only Projects)
- Design Energy Code

Yearly Average

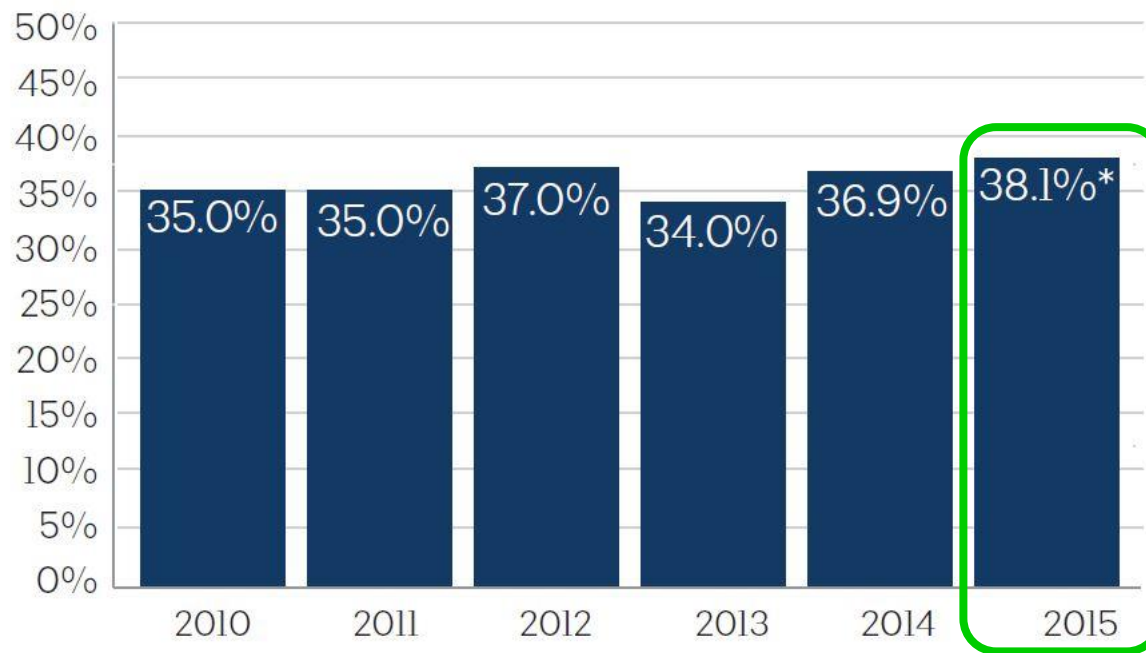
FIGURE 1. Average pEUI reduction over reporting years



*pEUI reduction savings for modeled projects have been modified to meet the minimum code equivalent savings. This modification increases the annual pEUI savings by 1.7%.

Yearly Average

FIGURE 1. Average pEUI reduction over reporting years



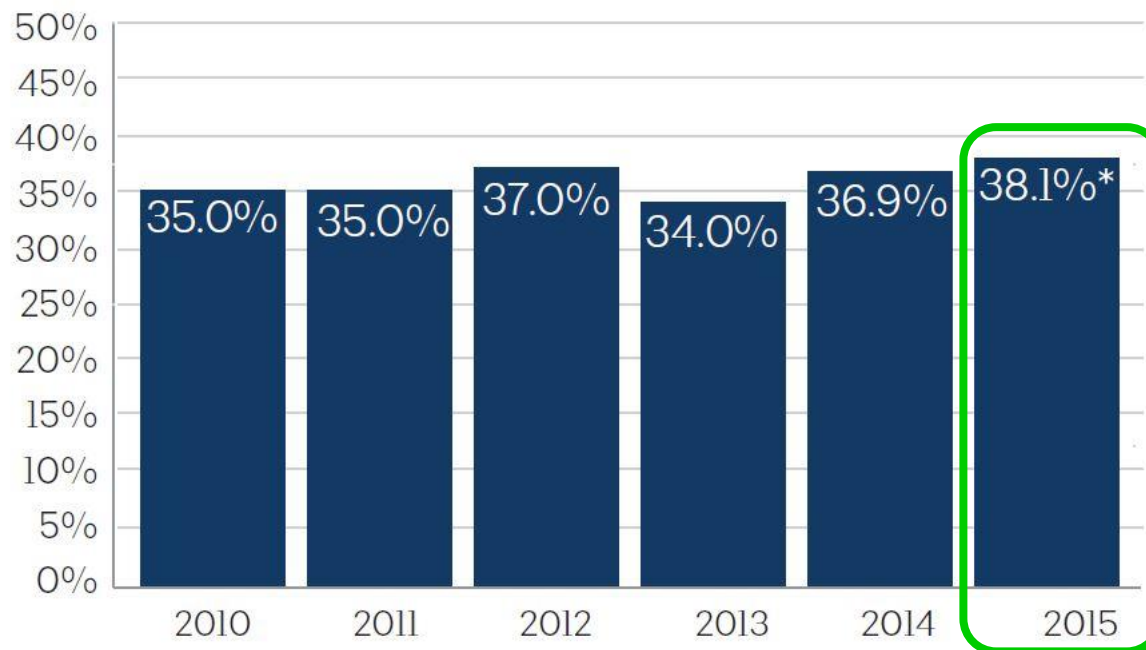
*pEUI reduction savings for modeled projects have been modified to meet the minimum code equivalent savings. This modification increases the annual pEUI savings by 1.7%.

**Highest
Reduction
Achieved!!**



Yearly Average

FIGURE 1. Average pEUI reduction over reporting years



*pEUI reduction savings for modeled projects have been modified to meet the minimum code equivalent savings. This modification increases the annual pEUI savings by 1.7%.

Target: 70%
Achieved: 38.1%

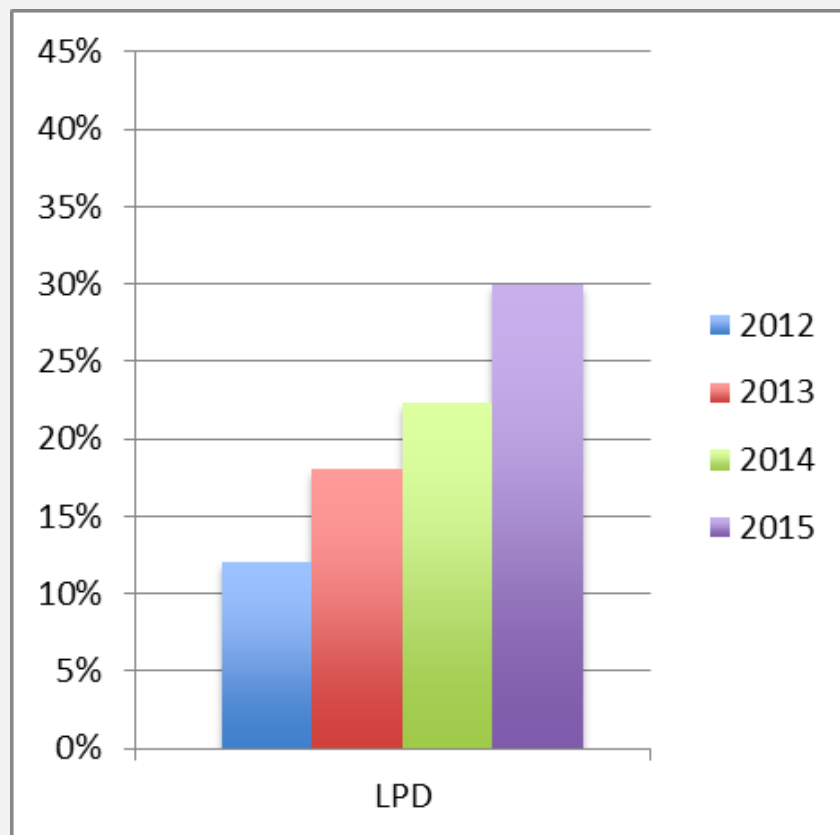
AIA National Data

FIGURE 4. 2015 data at a glance

2.6 Billion	Total gross square feet (GSF)	8.3% increase
5,982	Total number of whole building projects reported	37% increase
2.2 Billion	Total GSF whole building projects reported	17% increase
4461	Total number of interiors only projects reported	16% increase
323 Thousand	Total GSF interiors only projects reported	20% decrease
38.1%	Average predicted energy use intensity (pEUI) reduction—weighted by GSF	1.2% point increase
7.2%	Percent of total GSF meeting the 60% reduction target (previous target)	4.4% point decrease
3.9%	Percent of total GSF meeting the 70% reduction target (current target)	NA
10.3%	Percent of the projects meeting the 60% reduction target	1.1% point increase
59.41%	Percent of total GSF using energy modeling to predict energy consumption	8.8% point increase
614	Total number of projects meeting the 60% reduction target	42% increase

Boston

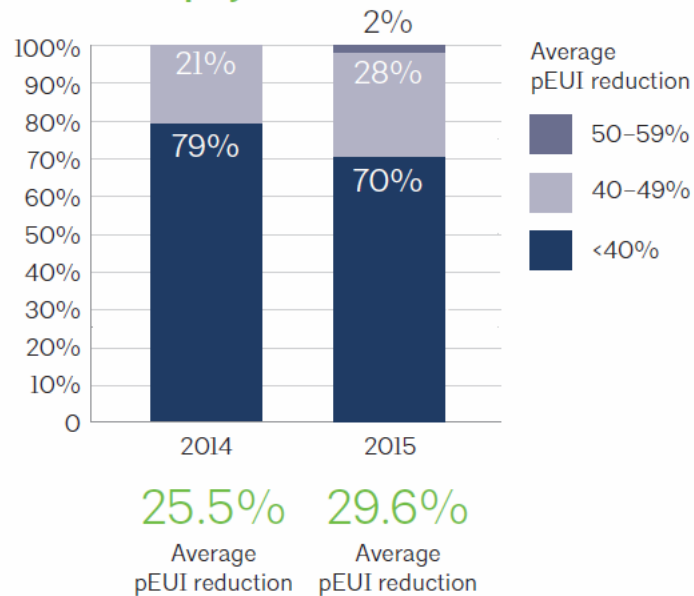
LPD



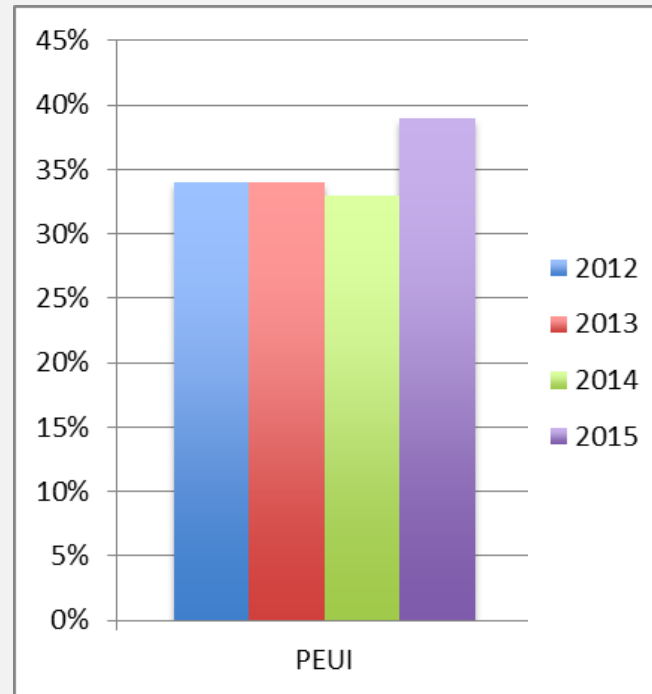
National Comparison

pEUI

FIGURE 18. Average pEUI reductions for Non-modeled projects



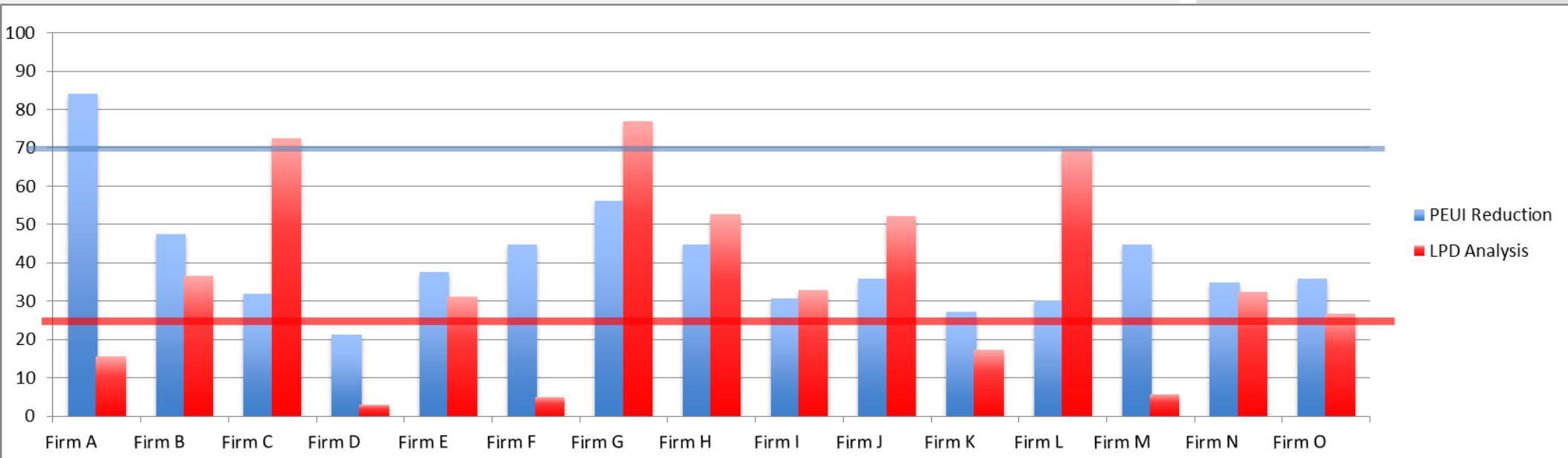
National



Boston

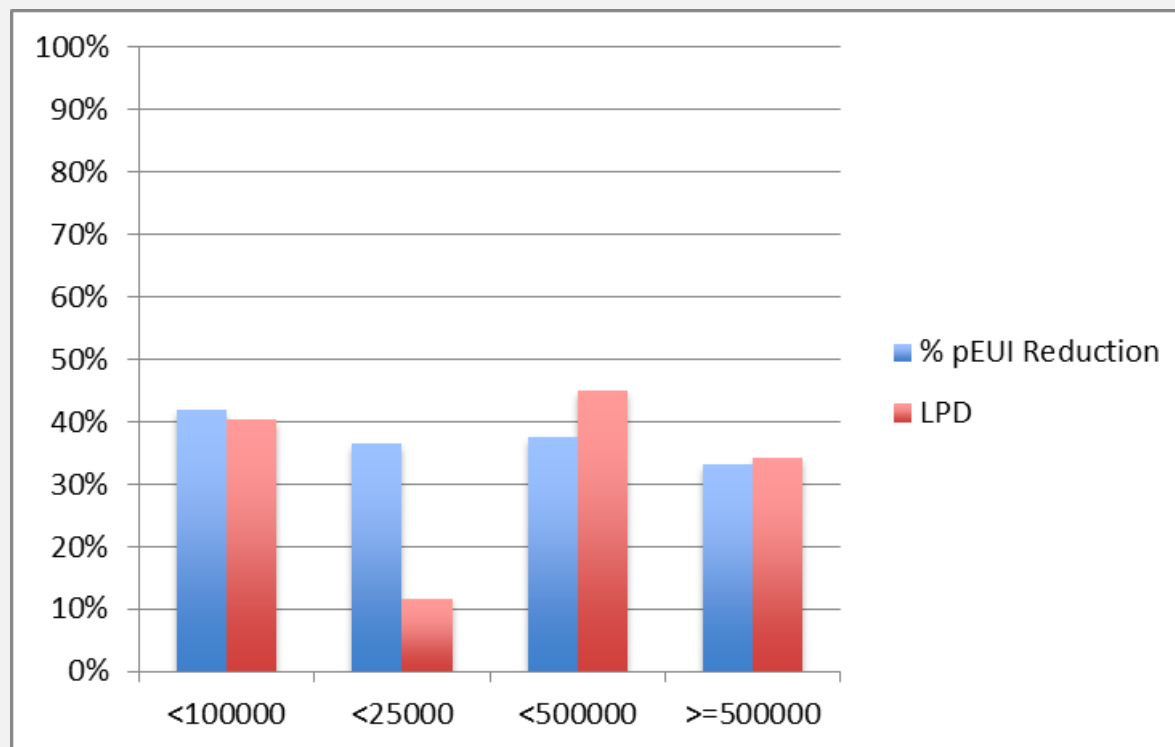
Analysis by:

Firm



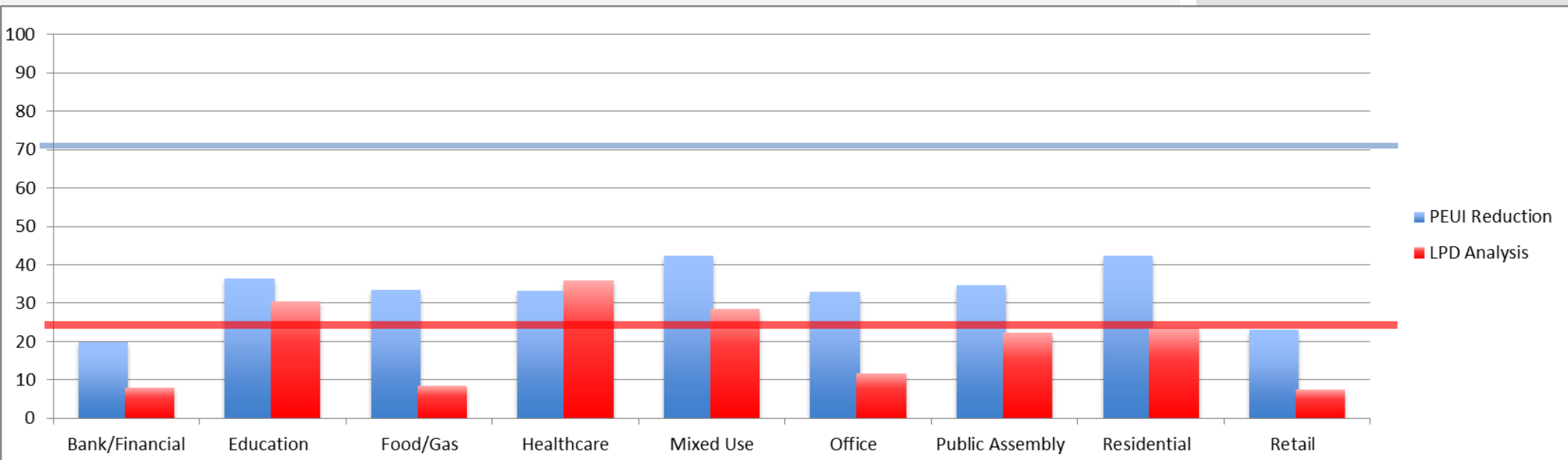
Analysis by:

**Square
Footage**



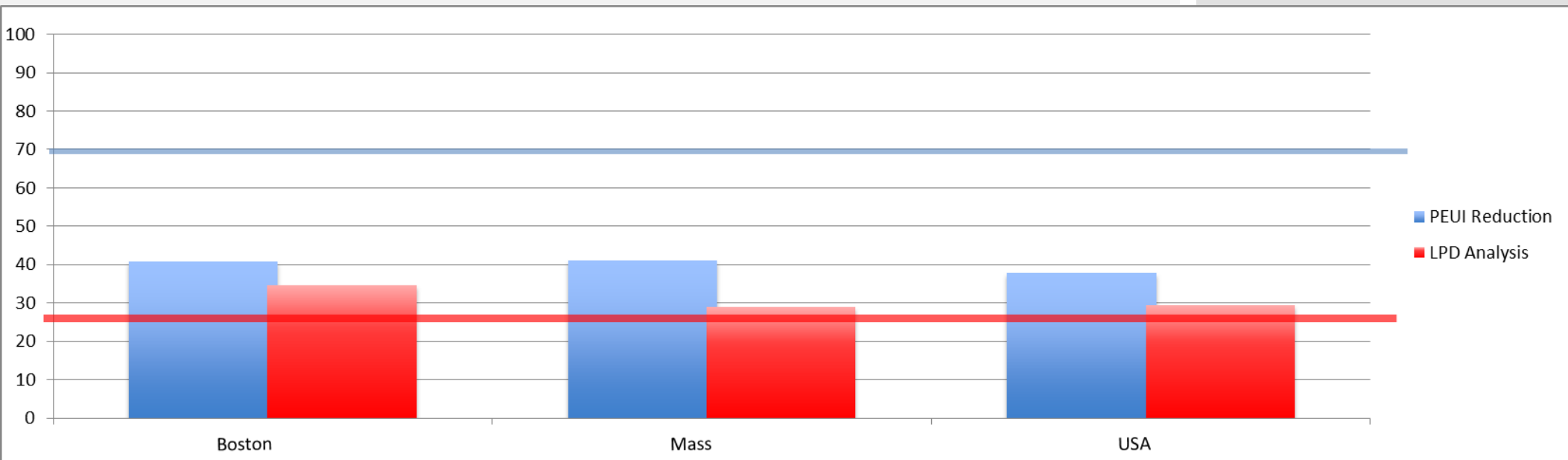
Analysis by:

Building Type



Analysis by:

Location



What is next

DDx, now we have years of data to draw on

Continue feeding and offering the DDx as a resource for ideas, counsel, and objective data

Keep Consistency, fidelity to data, and openness to new methods

Maintain design rigor to lead humanity away from the stresses of a changed climate

Report firms without overburdening any office that already has a full workload

Succeed to the degree that it encompasses more of the profession



Boston Society of Architects/AIA

290 Congress Street, Suite 200

Boston, MA 02210

Architects.org/bsaspace

Giovanna Araujo

AIA 2030 Commitment Report Fellow

giovanna.araujo@the-bac.edu